



Product Service

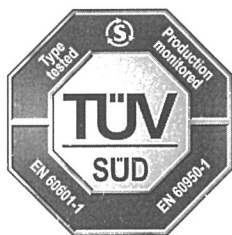
CERTIFICATE

No. Z2 15 10 13890 02478

Holder of Certificate: **Astec International Ltd.**
16th Floor, Lu Plaza, 2 Wing Yip Street
Kwun Tong
Kowloon
HONG KONG



Certification Mark:



Product: **Power supply**

The product was tested on a voluntary basis and complies with the essential requirements. The certification mark shown above can be affixed on the product. It is not permitted to alter the certification mark in any way. In addition the certification holder must not transfer the certificate to third parties. See also notes overleaf.

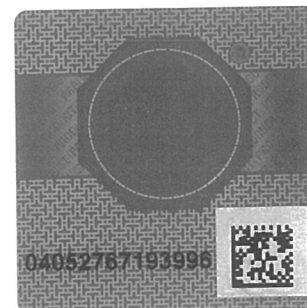
Test report no.: 682701300208

Valid until: 2020-10-27

Date, 2015-11-02

Page 1 of 2


(Jimmy Huang)





CERTIFICATE
No. Z2 15 10 13890 02478

Model(s): LCM300Q, LCM300U, LCM300L, LCM300W, LCM300N

Parameters:

Rated Input : 100-240VAC, 5.0A MAX, 50/60Hz
 Rated DC Output :
 For model LCM300Q:
 +24V, 14.5A MAX, 350W MAX;
 +5Vsb, 2.0A MAX (optional)
 For model LCM300U:
 +36V, 9.7A MAX, 350W MAX;
 +5Vsb, 2.0A MAX (optional)
 For model LCM300L:
 +12V, 25.0A MAX, 300W MAX;
 +5Vsb, 2.0A MAX (optional)
 For model LCM300W:
 +48V, 6.25A MAX, 300W MAX;
 +5Vsb, 2.0A MAX (optional)
 For model LCM300N:
 +15V, 20A MAX, 300W MAX;
 +5Vsb, 2.0A MAX (optional)

Protection Class : I
 Degree of Protection : IPX0

- Remark:
- When installing these equipments, all requirements of the mentioned standard must be fulfilled.
 - Clearance was evaluated for operating altitude up to 5000m above sea level.
 - Refer to the installation and operating instruction from manufacturer for the details of loading condition and operating temperature.
 - These power supplies contain output exceeding 240VA, when installing into end system, care must be taken that the output and associated wire(s) may not be touched.
 - Built-in type equipment, suitable enclosure should be provided in end system.
 - These power supplies have been evaluated according to EN 60601-1: 2006/A1:2013 with the following conditions:
 - 1.The output was not evaluated as patient connected circuits.
 - 2.Compliance with the requirements for EMC shall be evaluated for the end use product.
 - 3.These products have been investigated only as a component part for use in equipment where the suitability of the combination is subject to end product investigation.
 - 4.These power supplies must be installed in accordance with the instruction manual.
 - 5.These power supplies are designed to be protectively earthed. Earthing connection and continuity test shall be checked in end product.
 - 6.The leakage current test shall be checked in end product.
 - 7.The risk management requirements of the standard were not addressed.
 - 8.Clearance was evaluated for operating altitude up to 3048m above sea level.
 - 9.Clearance/creepage distance and dielectric strength were evaluated and fulfilled the requirements for MOPP.

Tested according to:

EN 60601-1:2006/A1:2013
 EN 60950-1:2006/A2:2013

Production Facility(ies):

62777, 28532